

DRY SEAL KEY



www.LaminatorsInc.com

877.OMEGA.77

NOTE: SEE LAMINATORS INSTALLATION GUIDELINES FOR MORE INFORMATION ON ATTACHMENT PROCEDURES

File Name DRY SEAL DETAILS

Date
7 / 23 / 2009

Scale
None

Dwg. No.
KEY

#8 or #10 X 1"
PPH SCREWS @
12" O.C. (TYP.)

END-OF-RUN
EXTRUSION

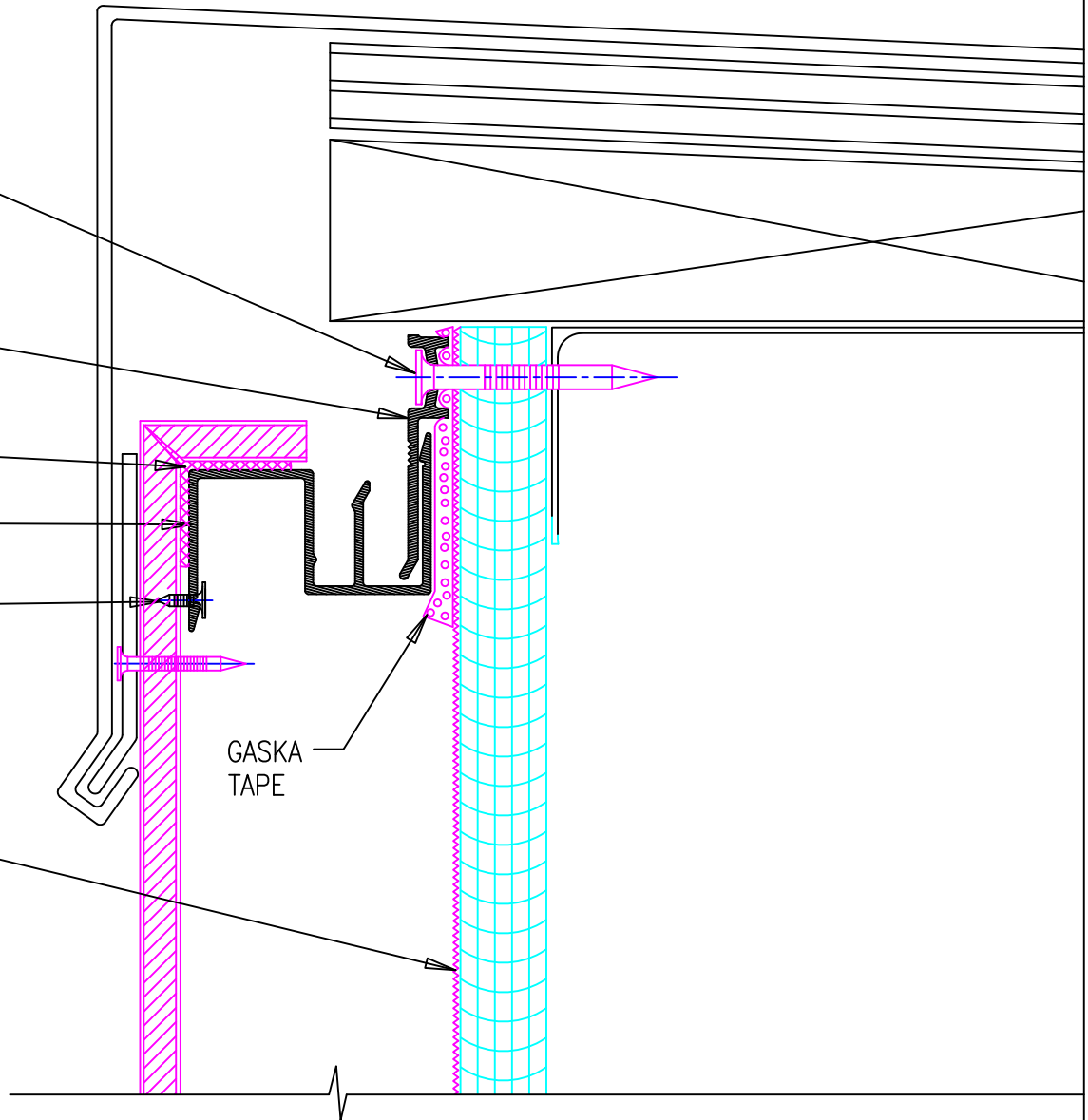
CAULK

PANEL EXTRUSION

#6 X 1/4" PPH
SCREWS @ 12"
O.C. (TYP.)

GASKA
TAPE

AIR & WATER
BARRIER



PARAPET DETAIL



www.LaminatorsInc.com

877.OMEGA.77

NOTE: SEE LAMINATORS INSTALLATION GUIDELINES
FOR MORE INFORMATION ON ATTACHMENT PROCEDURES

File Name DRY SEAL DETAILS

Date

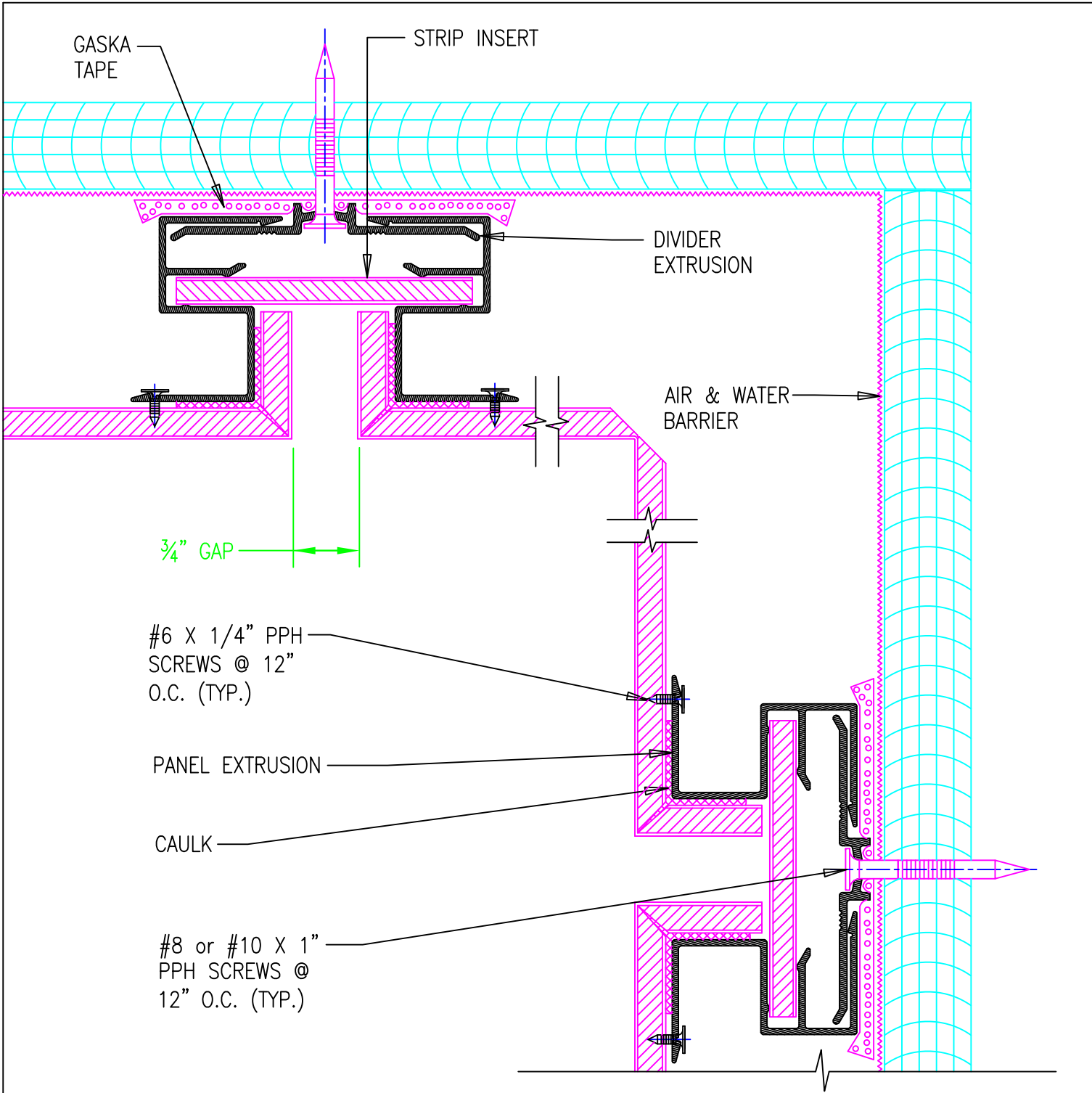
7 / 23 / 2009

Scale

None

Dwg. No.

DS1



INSIDE CORNER DETAIL

OMEGA PANEL PRODUCTS Ω

LAMINATORS INC.

www.LaminatorsInc.com 877.OMEGA.77

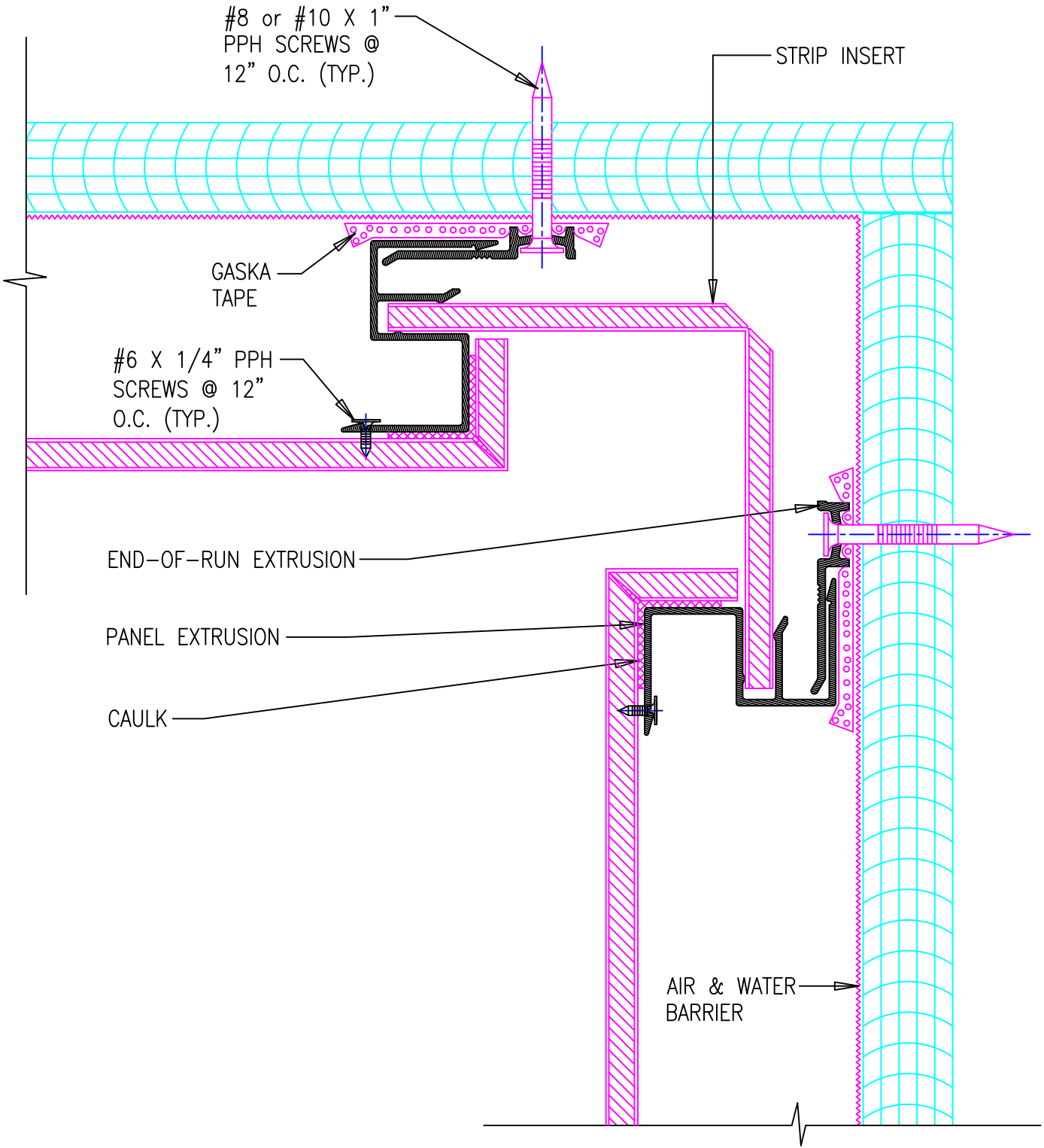
NOTE: SEE LAMINATORS INSTALLATION GUIDELINES FOR MORE INFORMATION ON ATTACHMENT PROCEDURES

File Name DRY SEAL DETAILS

Date
7 / 23 / 2009

Scale
None

Dwg. No.
DS2



INSIDE CORNER DETAIL



www.LaminatorsInc.com

877.OMEGA.77

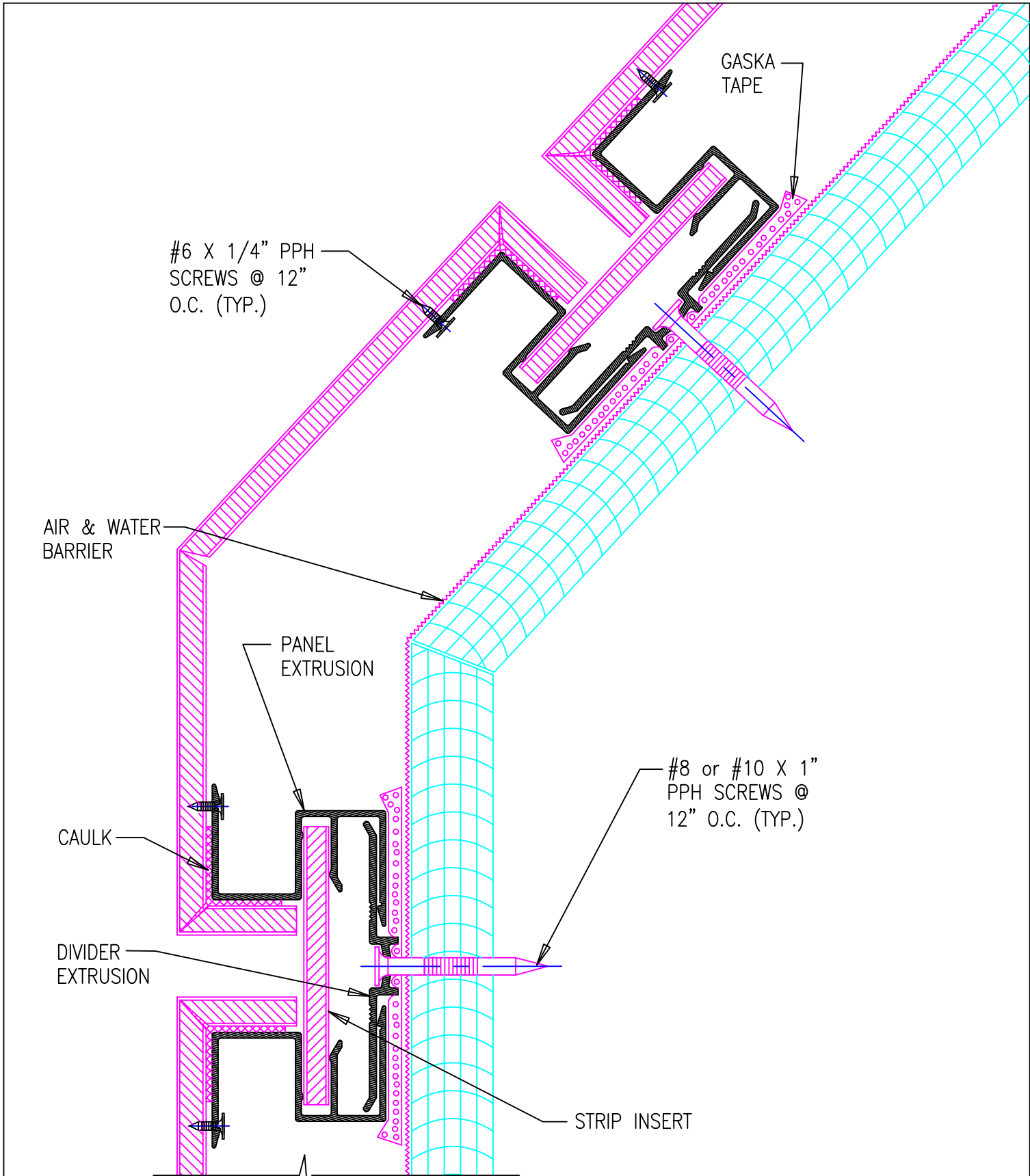
NOTE: SEE LAMINATORS INSTALLATION GUIDELINES
FOR MORE INFORMATION ON ATTACHMENT PROCEDURES

File Name DRY SEAL DETAILS

Date
7 / 23 / 2009

Scale
None

Dwg. No.
DS2-A



#6 X 1/4" PPH
SCREWS @ 12"
O.C. (TYP.)

GASKA
TAPE

AIR & WATER
BARRIER

PANEL
EXTRUSION

#8 or #10 X 1"
PPH SCREWS @
12" O.C. (TYP.)

CAULK

DIVIDER
EXTRUSION

STRIP INSERT

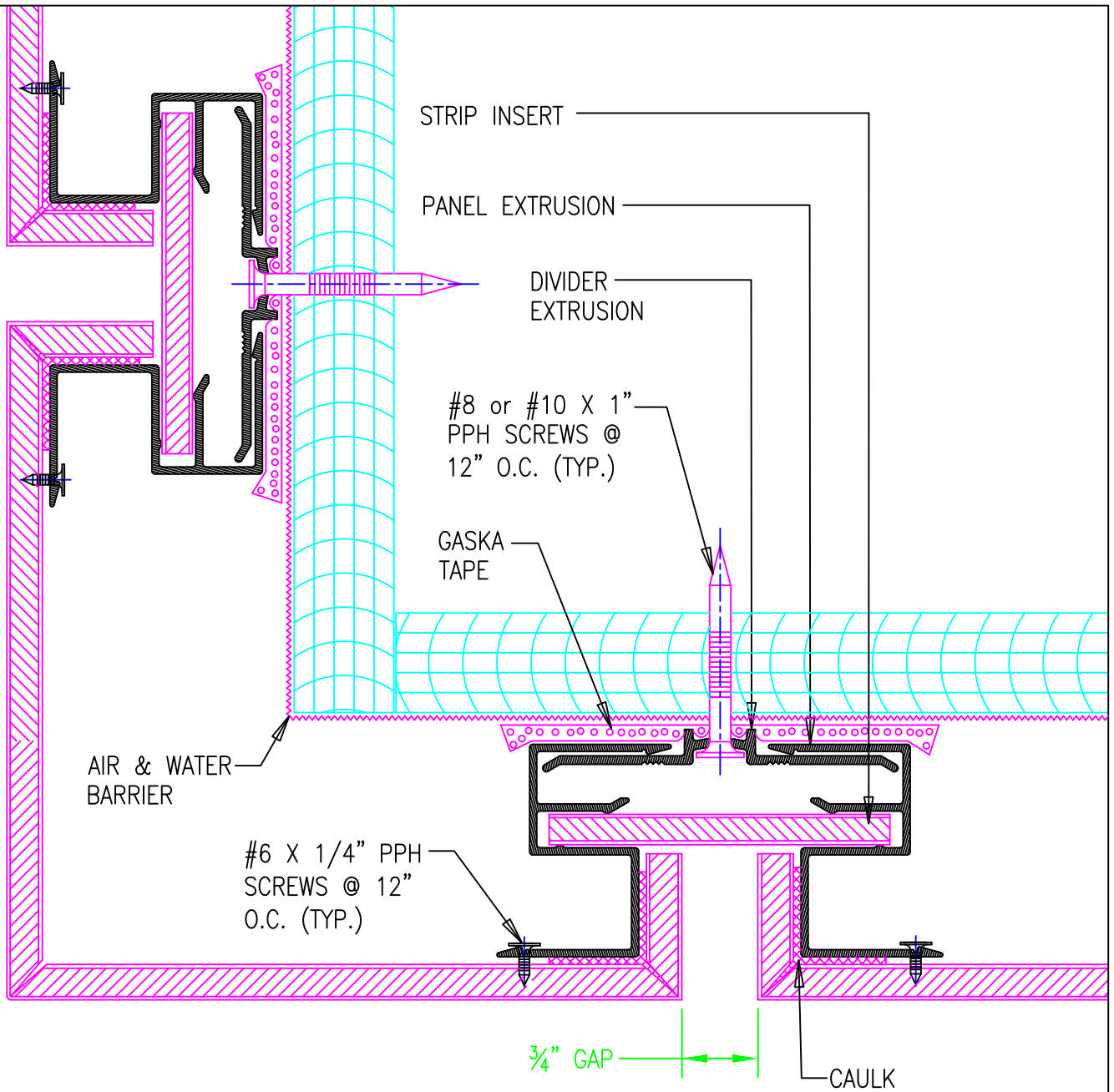
OUTSIDE CORNER DETAIL

OMEGA PANEL PRODUCTS Ω

LAMINATORS INC.

www.LaminatorsInc.com 877.OMEGA.77

NOTE: SEE LAMINATORS INSTALLATION GUIDELINES FOR MORE INFORMATION ON ATTACHMENT PROCEDURES		
File Name DRY SEAL DETAILS		
Date 7 / 23 / 2009	Scale None	Dwg. No. DS3



OUTSIDE CORNER DETAIL



www.LaminatorsInc.com

877.OMEGA.77

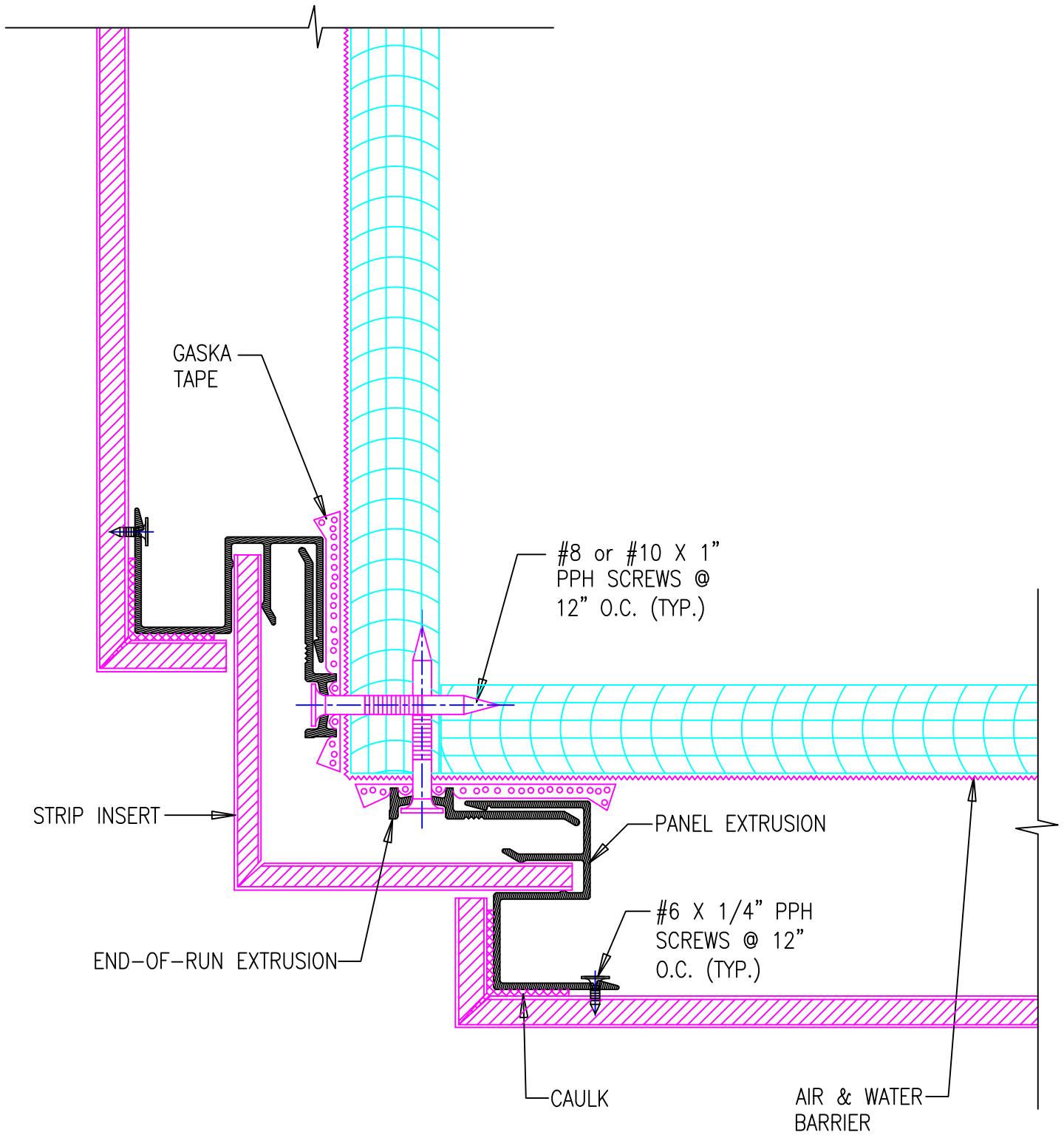
NOTE: SEE LAMINATORS INSTALLATION GUIDELINES FOR MORE INFORMATION ON ATTACHMENT PROCEDURES

File Name DRY SEAL DETAILS

Date
7 / 23 / 2009

Scale
None

Dwg. No.
DS4



OUTSIDE CORNER DETAIL



www.LaminatorsInc.com

877.OMEGA.77

NOTE: SEE LAMINATORS INSTALLATION GUIDELINES FOR MORE INFORMATION ON ATTACHMENT PROCEDURES

File Name DRY SEAL DETAILS

Date
7 / 23 / 2009

Scale
None

Dwg. No.
DS4-A

AIR & WATER BARRIER

PANEL EXTRUSION

CAULK

#8 or #10 X 1" PPH SCREWS @ 12" O.C. (TYP.)

3/4" GAP

DIVIDER EXTRUSION

INSERT STRIP

#6 X 1/4" PPH SCREWS @ 12" O.C. (TYP.)

GASKA TAPE

HORIZONTAL VIEW: ATTACHMENT DETAIL



www.LaminatorsInc.com

877.OMEGA.77

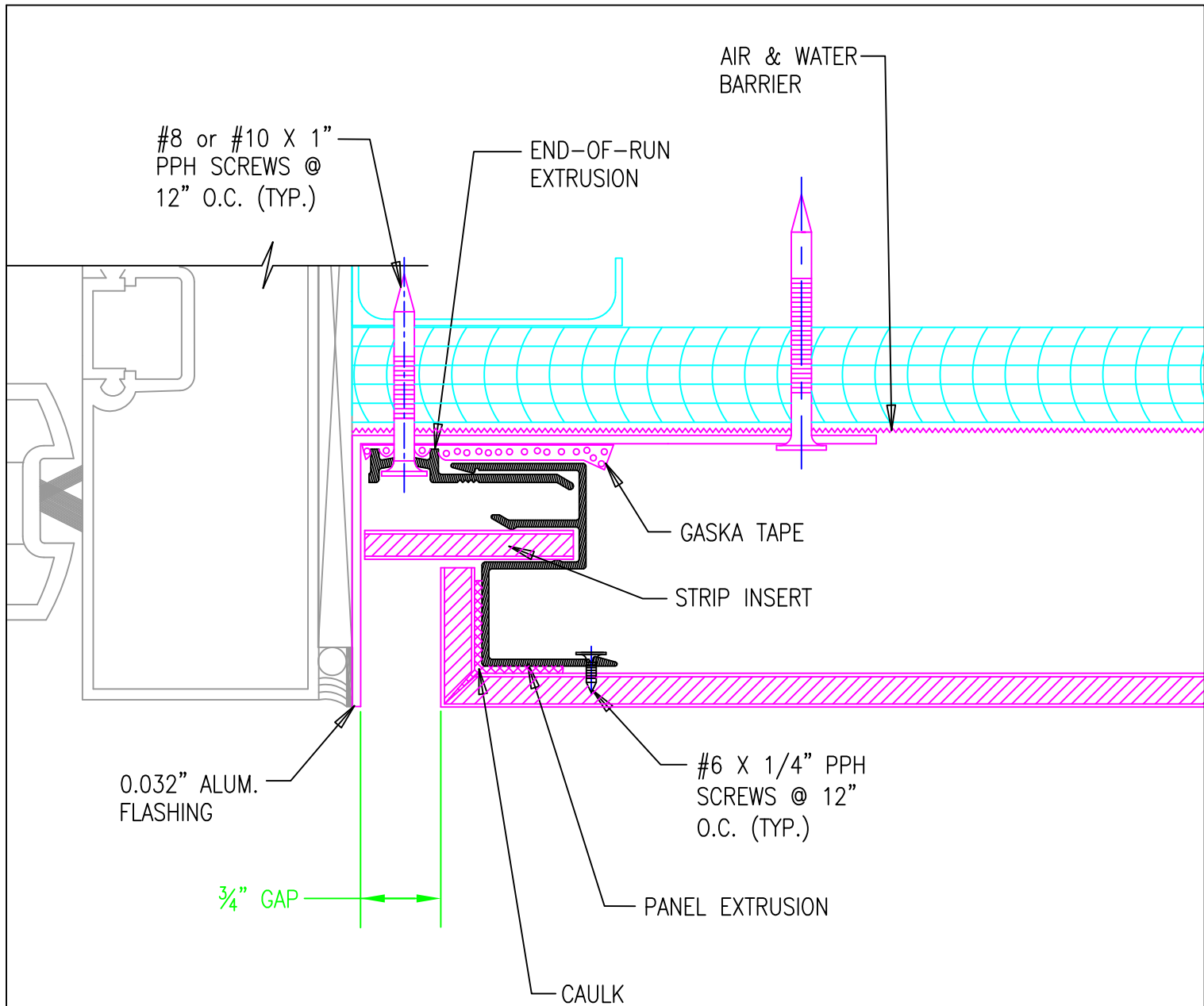
NOTE: SEE LAMINATORS INSTALLATION GUIDELINES FOR MORE INFORMATION ON ATTACHMENT PROCEDURES

File Name DRY SEAL DETAILS

Date
7 / 23 / 2009

Scale
None

Dwg. No.
DS5



JAMB DETAIL

OMEGA PANEL PRODUCTS Ω

LAMINATORS INC.

www.LaminatorsInc.com 877.OMEGA.77

NOTE: SEE LAMINATORS INSTALLATION GUIDELINES FOR MORE INFORMATION ON ATTACHMENT PROCEDURES		
File Name DRY SEAL DETAILS		
Date 7 / 23 / 2009	Scale None	Dwg. No. DS6

#8 or #10 X 1"
PPH SCREWS @
12" O.C. (TYP.)

END-OF-RUN
EXTRUSION

CAULK

PANEL EXTRUSION

#6 X 1/4" PPH
SCREWS @ 12"
O.C. (TYP.)

GASKA
TAPE

AIR & WATER
BARRIER

SILL DETAIL



www.LaminatorsInc.com

877.OMEGA.77

NOTE: SEE LAMINATORS INSTALLATION GUIDELINES
FOR MORE INFORMATION ON ATTACHMENT PROCEDURES

File Name DRY SEAL DETAILS

Date
7 / 23 / 2009

Scale
None

Dwg. No.
DS7

AIR & WATER BARRIER

STRIP INSERT

#6 X 1/4" PPH SCREWS @ 12" O.C. (TYP.)

PANEL EXTRUSION

CAULK

END-OF-RUN EXTRUSION

CAULK

GASKA TAPE

3/4" GAP

0.032" ALUM. FLASHING

#8 or #10 X 1" PPH SCREWS @ 12" O.C. (TYP.)

CAULK

HEAD DETAIL



www.LaminatorsInc.com

877.OMEGA.77

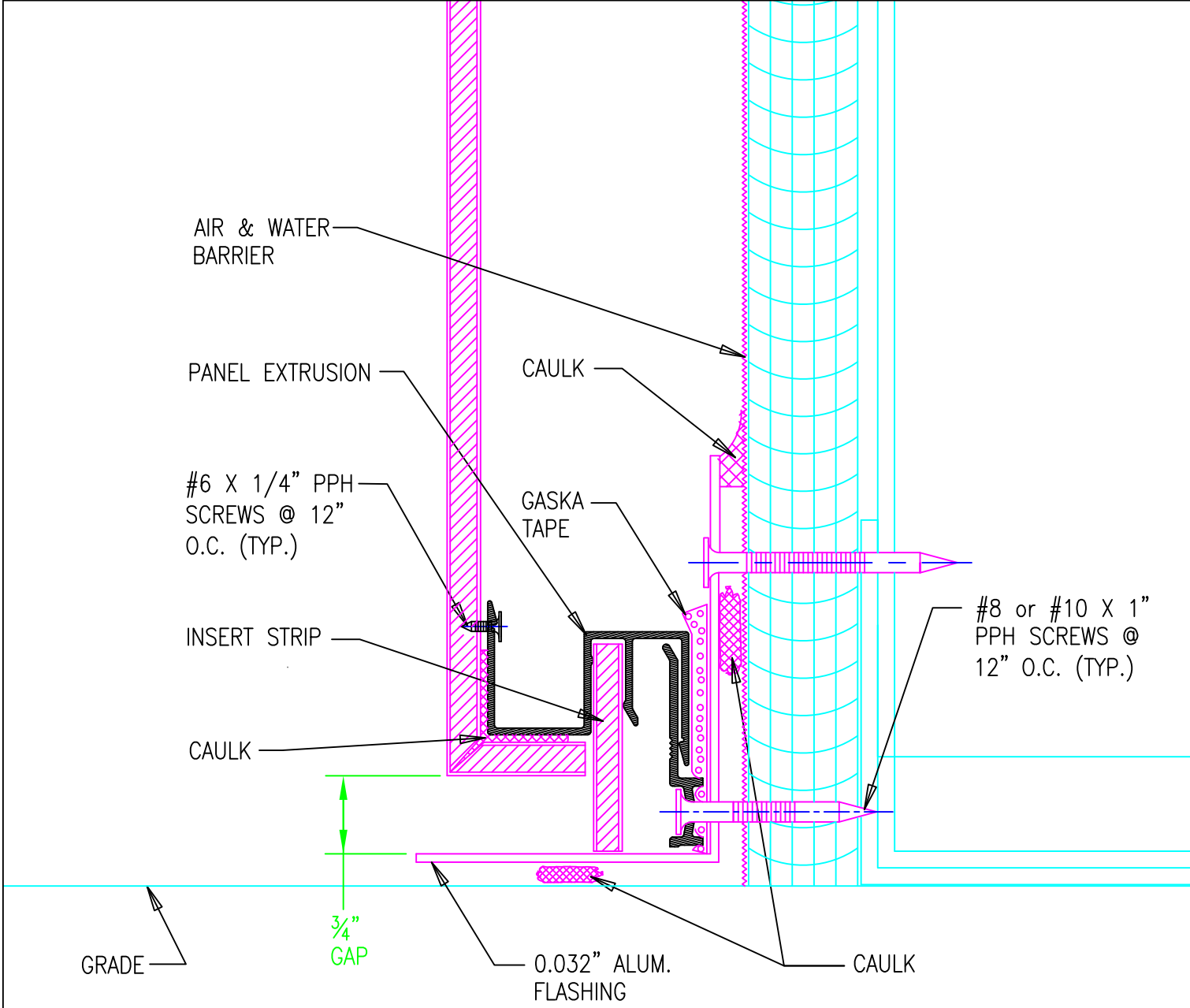
NOTE: SEE LAMINATORS INSTALLATION GUIDELINES FOR MORE INFORMATION ON ATTACHMENT PROCEDURES

File Name DRY SEAL DETAILS

Date 7 / 23 / 2009

Scale None

Dwg. No. DS8



GRADE DETAIL

OMEGA PANEL PRODUCTS Ω

LAMINATORS INC.

www.LaminatorsInc.com 877.OMEGA.77

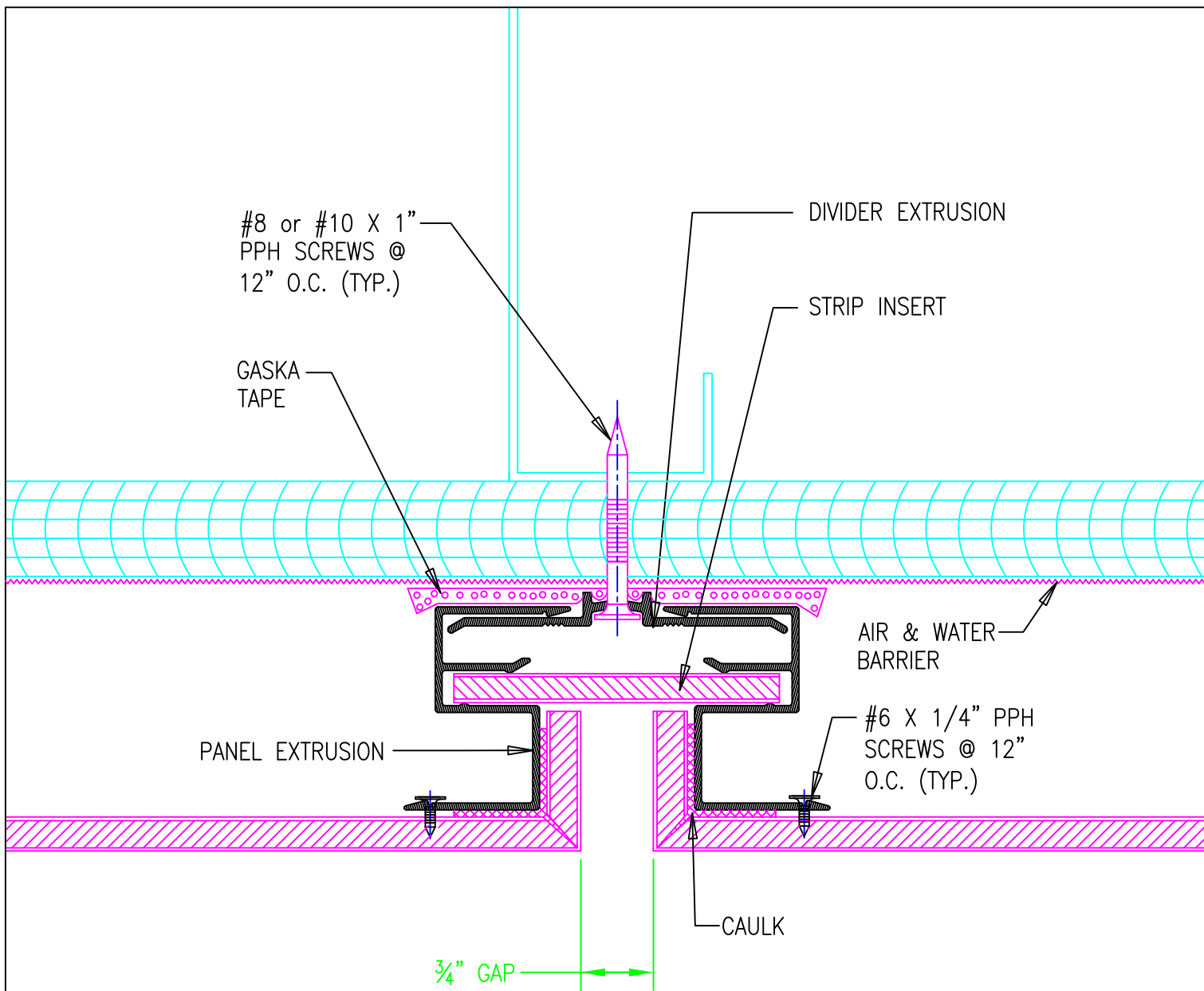
NOTE: SEE LAMINATORS INSTALLATION GUIDELINES FOR MORE INFORMATION ON ATTACHMENT PROCEDURES

File Name **DRY SEAL DETAILS**

Date
7 / 23 / 2009

Scale
None

Dwg. No.
DS9



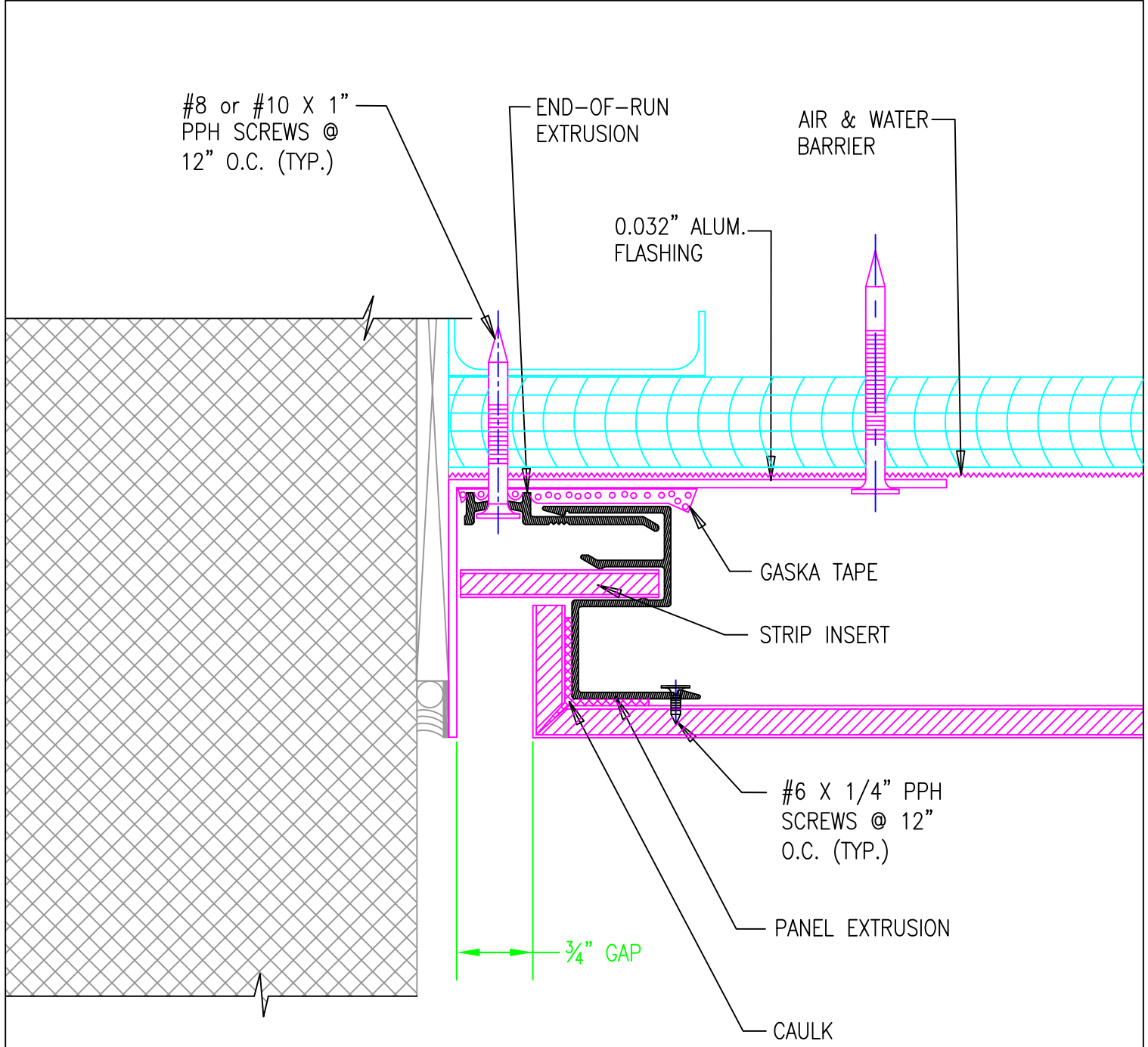
VERTICAL VIEW:
ATTACHMENT DETAIL

OMEGA PANEL PRODUCTS Ω

LAMINATORS INC.

www.LaminatorsInc.com 877.OMEGA.77

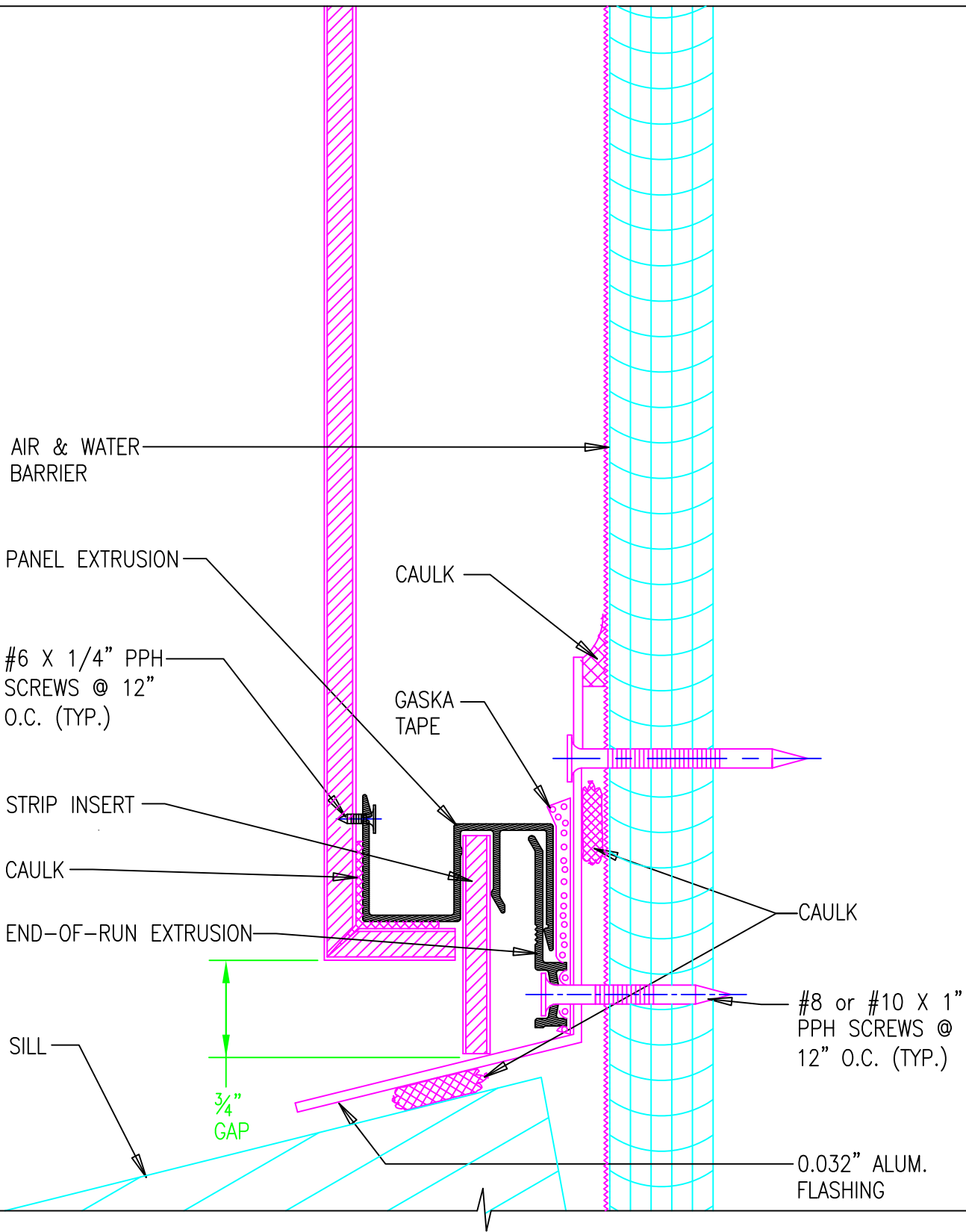
NOTE: SEE LAMINATORS INSTALLATION GUIDELINES FOR MORE INFORMATION ON ATTACHMENT PROCEDURES		
File Name DRY SEAL DETAILS		
Date 7 / 23 / 2009	Scale None	Dwg. No. DS10



END OF RUN

OMEGA PANEL PRODUCTS Ω
LAMINATORS INC.
 www.LaminatorsInc.com 877.OMEGA.77

NOTE: SEE LAMINATORS INSTALLATION GUIDELINES FOR MORE INFORMATION ON ATTACHMENT PROCEDURES		
File Name DRY SEAL DETAILS		
Date 7 / 23 / 2009	Scale None	Dwg. No. DS11



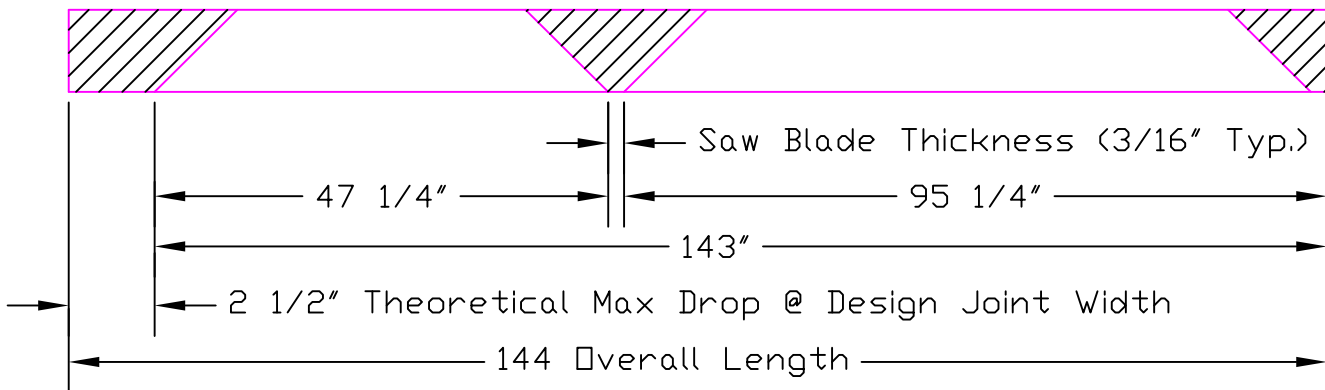
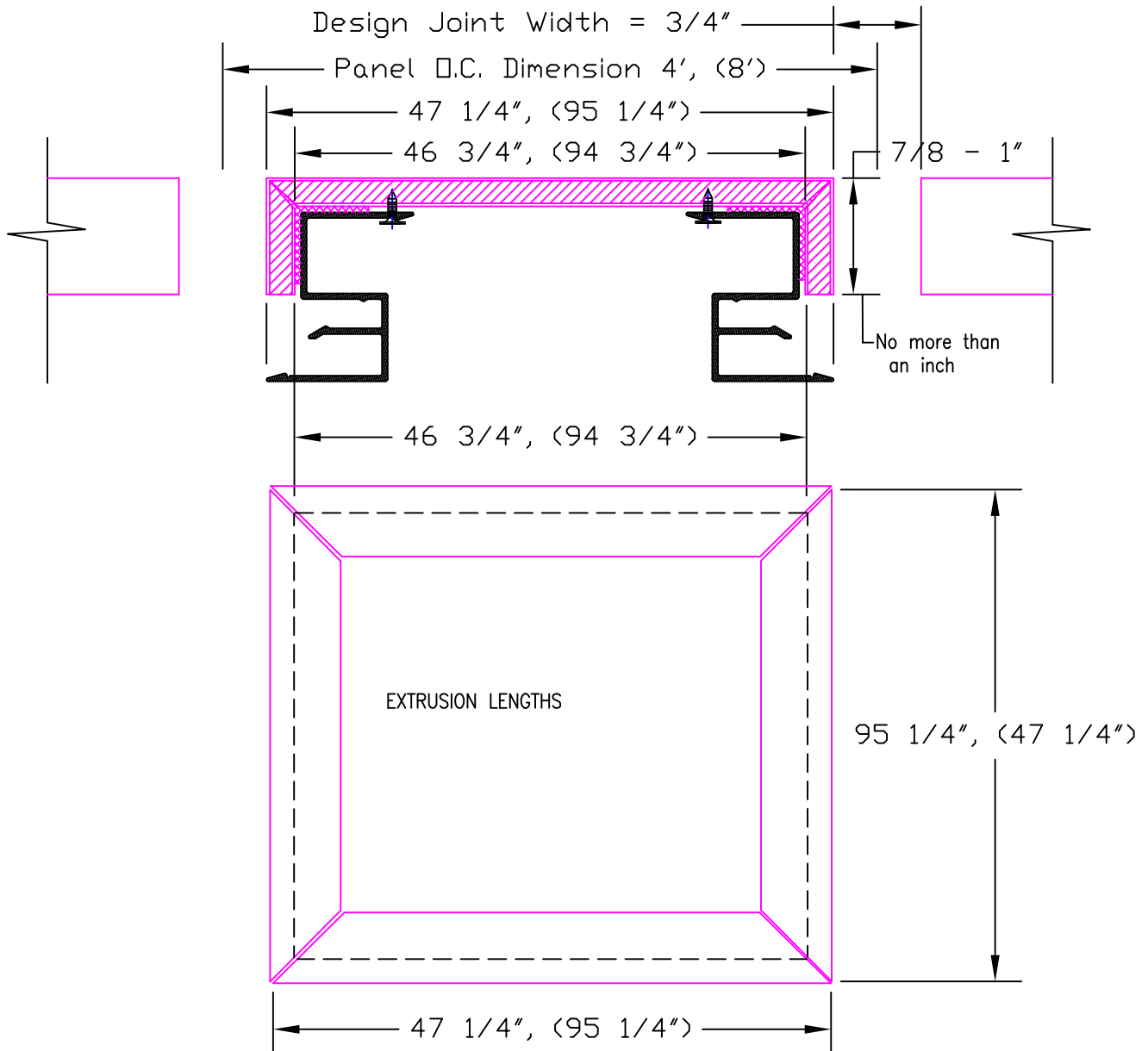
SILL DETAIL

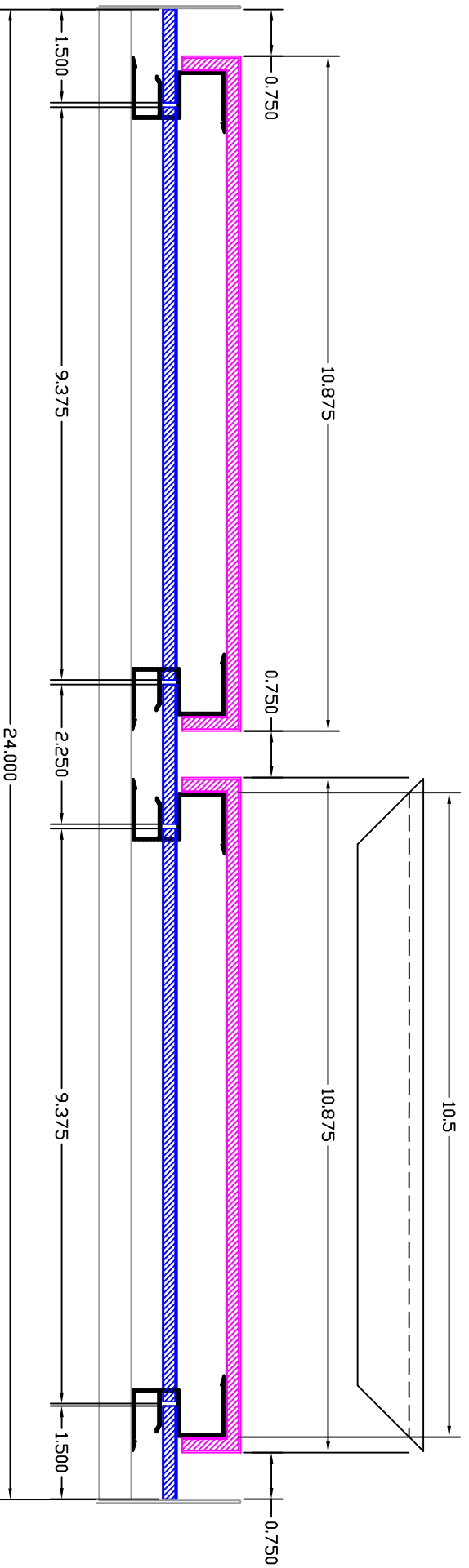
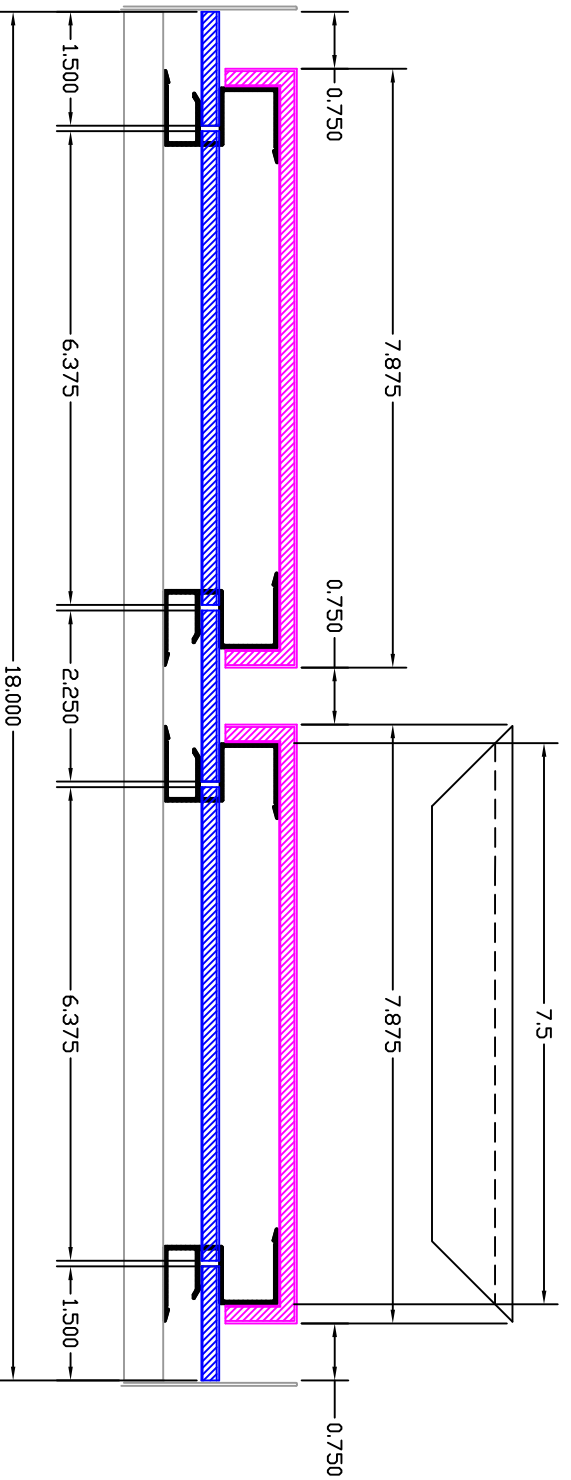
OMEGA PANEL PRODUCTS Ω

LAMINATORS INC.

www.LaminatorsInc.com 877.OMEGA.77

NOTE: SEE LAMINATORS INSTALLATION GUIDELINES FOR MORE INFORMATION ON ATTACHMENT PROCEDURES		
File Name DRY SEAL DETAILS		
Date 7 / 23 / 2009	Scale None	Dwg. No. DS12





NOTE: SEE LAMINATORS INSTALLATION GUIDELINES FOR MORE INFORMATION ON ATTACHMENT PROCEDURES

File Name DRY SEAL DETAILS

Dwn. By S.T.

Released Date 7/23/09

Scale None

Checked By

Dwg. No. DS14

